

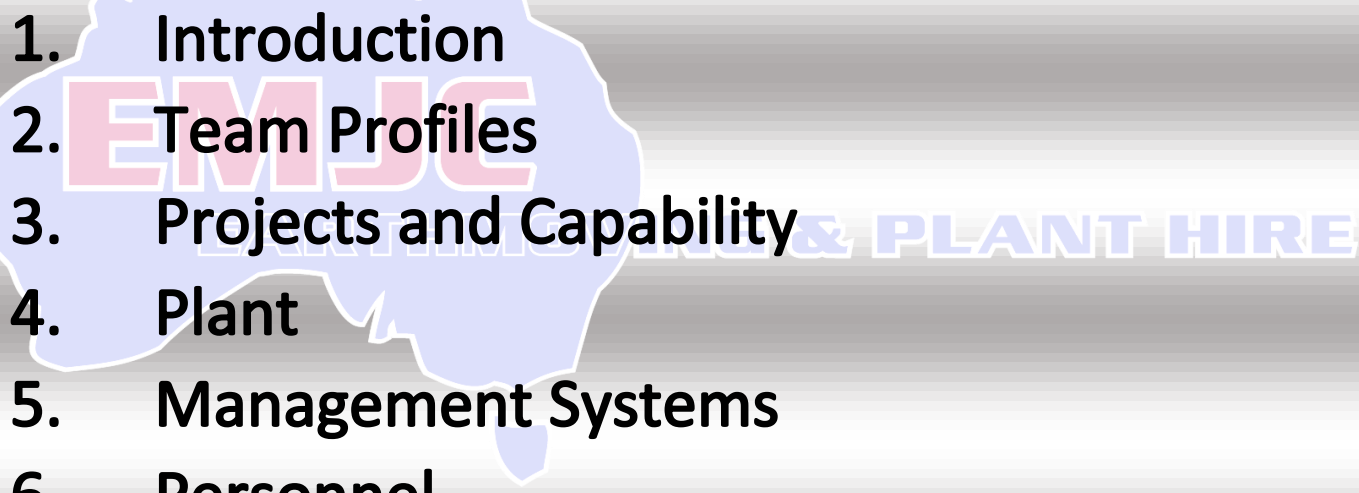


Corporate Profile

EMJC
EARTHMOVING & PLANT HIRE



Contents

- 
1. Introduction
 2. Team Profiles
 3. Projects and Capability
 4. Plant
 5. Management Systems
 6. Personnel

Introduction

EMJC Earthmoving and Plant Hire is a family owned business located in Hazelmere Western Australia providing services and equipment for the civil earthmoving, construction and mining industries.

EMJC is committed to tailoring packages of equipment and services to compliment your project needs, specialising in the following areas:

- Tails Dam Construction & Lifts
- Haul Road Construction
- Wet hire for remote exploration & construction works
- Dry Equipment Hire
- Fully Maintained Hire
- Heavy Haulage and Logistics
- Heavy Duty Mechanical, Electrical and Boilermaker Field Service Support
- Onsite stock supplies:
 - Fully stocked mechanical parts containers
 - Fully stocked traffic management containers
- Solar Lighting Towers
- Off-site mechanical support



Manager Profiles

Ron Clarke – Managing Director



In 2008 Ron Clarke led the company expansion into the earthmoving rental market, which today employs over 30 employees and includes a fleet of over 80 pieces of plant. After 20 years farming in the Central wheatbelt, Ron has a strong understanding of the critical needs for high level quality equipment required to ensure maximisation of production and successful project outcomes. This exposure has resulted in the ability to investigate and provide tailored successful solutions for our clients.

Steve Clarke – Director



With over 10 years experience working as a Boilermaker, Steve Clarke commenced trading his own mechanical business in 2005, supporting the rental fleet as well as providing services for other earthmoving and mining industry leaders. With a team of qualified tradespersons, Steve manages all operations of the mechanical, fabrication and blast and paint departments as well as the design and development of specialised tanks, trailers and support vehicles. Steve understands the importance of preventative maintenance and health and safety and ensures this culture is driven and encouraged amongst the team.

Christine Darling – Commercial Manager



With over 15 years' experience in operational, financial and commercial roles across various industries, Christine has been in the earthmoving and mining industry for the last 8 years. Predominantly working in a General Manager role for a principal contractor to Rio Tinto and others, Christine's exposure lies in management of Pilbara based projects and contracts from tender stage through to practical completion. Having worked with mining leaders and EPCM groups, Christine understands the importance of maintaining and improving safety culture whilst maximising opportunities for training and mentoring within the local communities.

Michael Anderson

Has over 19 years' experience as a Civil Earthworks Superintendent, and a following 14 years' experience in roles leading from machine operator, leading hand, foreman to supervisor. Michael has a broad and extensive knowledge of all aspects of civil earthworks, including; road building, pipeline construction, mining, structures including tailings dams and bridges, rail formations and drainage structures. Also having extensive experience on projects from tender documentation stage through to final completion and sign-off of works, including interpretation of plans, drawings and work programmes, liaising with client, and organising materials and workforce to deliver project outcomes.

Michael has a sound knowledge of OHS systems, requirements and procedures and has a special interest in mentoring and training supervisors through the workforce to leadership roles, with a high capacity for motivation of work crews to achieve long-term project goals.

Edward Harris

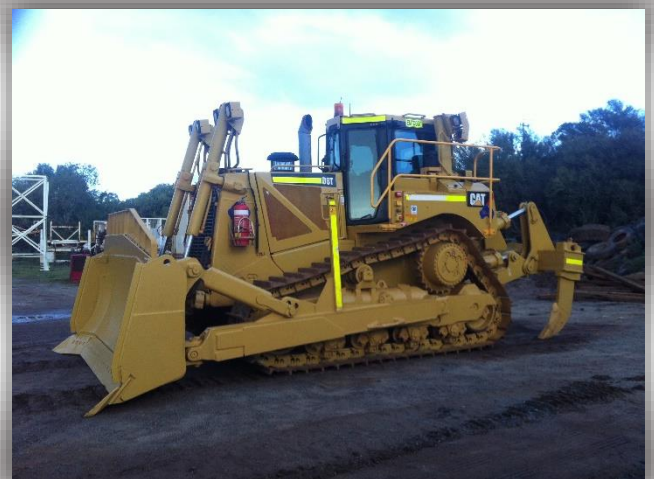
Has 30+ years' industry experience in the Civil Construction & Mining Industry. Done expansion projects, roadworks, sub-division, drainage and infrastructure construction experience. Has worked many years in the coal mining industry and managing coal stockpiles. Has vast experience on projects of varying sizes and committed to implementing safety standards and OHS requirements. Edward has project management skills, supervisors ticket and is a proven leader, has excellent decision making skills and is ethical, honest, and dependable. Has proven ability to cope under pressure with high volumes of work. Able to liaise with clients and relevant authorities and inspectors with regards to quality of workmanship and meeting stringent construction standards. Successful record in delivering projects safely, within time, in scope and on budget, also a competent plant operator of all machines.



Frank Harris

A big percentage of Franks work has consisted of the construction of new tailings dams such as, Port of the Murrin Murrin Nickle Mine Dam, new tailing dams at Kambalda, Emily Anne Mine and Darlot Gold Mine to name some. The continuous raising of the dams for S.O.G. Mines, Jundee, Nimery Gold, Granny Smith, Kwinana Belle again to name but a few around the Gold Fields. Also the new Kimberly Diamond Mine in the Kimberly's and a new extension to the dam at the Whale Back Mine in Newman. The materials were all sourced locally for the construction of these dams including the tails themselves.

I was involved with transforming Kimberley Diamond Mine from exploration to production. The construction of FMG rail and access road from Port Headland to Cloud Break. Then later the rail and facilities construction, for Cloud Break to Xmas Creek. A Supervisor at the Cape Lambert project and Brockman 4 Rail and Hub facilities, major earthworks for rail and storage iron ore projects.



Projects & Capability

EMJC have been engaged in many projects and partnerships for the supply of plant and logistics as well as small operational projects.

EMJC has delivered positive project outcomes on the following; -

Griffin Lanco – Miscellaneous Earthworks and Plant Hire

Rehabilitation of mining areas and the supply of mining equipment / machines and maintenance personal. Stock pile management and also currently have and carry out the cartage of flyash from the Bluewaters power station.

Rothsay Gold Mine – Miscellaneous Earthworks

Construct access roads, construct ramps for pit and portal access, construct drill pads, dust suppression, maintenance grading, traffic management and field service support.

Sinosteel Midwest Corporation – Exploration and Camp Earthworks

Construct access roads, construct drill pads, preliminary earthworks for camp, prepare fuel hub area, construction of car parks, drainage works, maintenance grading, dust suppression, traffic management and field service support.

Solomon Mine – Yamatji partnership – Road Construction and Maintenance

In partnership with Yamatji Mining and Civil, EMJC supplied all plant, machinery and operators required for the construction and maintenance of 50km or road between Auski Road House and Solomon mine hub.

Roy Hill Rail Project – NRW – Equipment supply and Maintenance Support

EMJC supply over 20 pieces of heavy earthmoving equipment, containers of support materials and all field service maintenance personnel for the construction of rail project.

Cliffs Natural Resources Mt Richardson – Major exploration project

Construct all access roads and drill pads.

Plant

COMPACTORS – 825 COMPACTORS

SCRAPERS – 631 & 633

DOZERS D6 – D10 CATERPILLAR INCLUDING SWAMPIES, STICK RAKES AND GPS

DUMP TRUCKS – 40 – 50T ARTIC

EXCAVATOR – 14T – 45T CATERPILLAR

GRADER 140M – 16M CATERPILLAR WITH GPS

LOADERS – 928, 930 INTEGRATED TOOL CARRIERS, 966 – 988H

ROLLERS - SMOOTH DRUM AND PAD FOOT ROLLERS

SCRAPERS – 623, 631, 637 CATERPILLAR

SERVICE TRUCKS – 6,500 – 15,000 LTR, 6 X 4, 8 X 4

SKID STEERS – 257 RUBBER TRACK, S200 AND TIPPER COMBO

TRUCKS – 9 – 14T WITH HIABS

TRUCKS – HEAVY HAULAGE 60T FLOAT, FLAT TOPS, DROP DECKS

WATERTRUCKS – 15,000 – 30,000 LTR



Management Systems

OHS Management

EMJC Earthmoving & Plant Hire is committed to the health, safety and welfare of our employees, clients, subcontractors and the environment. An effective and comprehensive OHS Management System enables us to achieve our goal of safety excellence.

The OHSMS enables EMJC Earthmoving & Plant Hire to systematically identify, assess and control all hazards and risks encountered through the execution of our work. The intention being to eliminate preventable workplace injuries and illness, prevent avoidable costs and maintain productivity and efficiency.

Components of the EMJC Earthmoving & Plant Hire OHSMS include (but are not limited to):

- Mechanisms for hazard identification and risk management.
- The provision of on-going education and training including induction training.
- Establishment of targets and objectives and role responsibilities/accountabilities.
- Incident reporting, investigation and controlling and reviewing corrective actions.
- Injury management.
- Procedures and systems for plant, equipment and hazardous substance control.
- Inspections, audits and reviews.
- Subcontractor management and control.

EMJC Earthmoving & Plant Hire continually reviews and monitors the OHSMS to ensure that it is effective, current and continues to meet the requirements of clients.

Personnel

PERSONNEL

EMJC Earthmoving & Plant Hire has a very stable, well-trained workforce with broad experience and intense loyalty. The benefit of this to clients is that EMJC Earthmoving & Plant Hire project teams remain intact from one project to another and usually develop partnering relationships that enhance project delivery.

Through careful selection and development EMJC Earthmoving & Plant Hire staff have a high level of motivation and commitment to safety, quality and environmental conformance.

The senior civil engineering personnel have been drawn from a cross-section of major Australian organisations and are very customer focussed. They apply their particular skills and abilities to assist clients achieve the best outcomes for each project.

