

Surf City CRANES

We're the best at what we do!

CAPABILITY STATEMENT

P | 0402 269 535 or 1300 444 737

A | 21 Hutchinson St, Burleigh Heads, Gold Coast, QLD 4220

A | 106 Mt Petrie Road, Belmont Qld, 4153

A | Cudgen, Northern NSW, 2487

A | Yatala

W | www.surfcitycranes.com.au



TABLE OF CONTENTS

- 6. COMPANY SNAPSHOT
- 9. OUR HISTORY
- 10. OUR FLEET
- 15. SYSTEMS
- 16. TEAM
- 18. CERTIFICATES AND LICENSES
- 18. INDUCTIONS
- 18. RATES
- 19. VISION
- 20. CERTIFICATES
- 2-5 APPENDIX



SUCCESSFUL PROJECTS WE HAVE SUPPLIED CRANES, LABOUR, TRAFFIC CONTROL

Our team has proven over and over again how experienced and efficient we are on numerous sites, due to our efficiencies we are providing machines, labour, traffic control, electrical spotters
Surf City Cranes has been involved with the following projects on the Gold Coast and southeast Queensland:

- Acciona Coombabah STP Project - main mobile crane supplier for this project from 2019 to 2022 and still currently assists with maintenance. Worked directly with Acciona and all sub contractors on this site to ensure that operations were streamlined. Other sub-contractors were Pensar, BDM Stainless, Allroads and more.
- Preferred Supplier for Gold Coast, Tweed City and Byron Shire Councils
- Seaworld Village Roadshow & Badge Constructions roller coaster "Leviathan Vortex".
- John Holland - Gold Coast Seaway Project
- Shadforth - Civil works construction sites
- FKG Group - Project - Coomera State High School
- Lendlease - Tweed Valley Hospital (Early works)
- Fulton Hogan - Blue Rock Quarry upgrade project
- Gold Coast 2018 Commonwealth Games - Lendlease / GL events exponet Projects
- Boral Resources - Boral Ormeau Quarry upgrade project 2018-2019
- Lendlease - Robina town shopping centre upgrade project
- Seymour Whyte - Smith Street upgrade barrier install project Adco Constructions -
- Stage One Gold Coast Domestic Airport Project
- Golding Constructions - John Muntz Cause Way Project McConnell Dowell - Light Rail project (Olsen Avenue)
- McConnell Dowell - Dyandra road (Brisbane airport runway project)
- Construct Constructions - Nauru NRPC and Garrison Support Services Project (crane construction works). Provided cranes and operators, supervisors and mechanics on FIFO.
- Seymour Whyte ABI JV Banora Point

SERVICES





*Naura, Boral Crushing Plant, Commonwealth Games
Surf City Cranes provided drivers, dogman, riggers and mechanics*





*Boral Crushing Plant, Coombabah Treatment Plant, Robina Town Centre, Wet n' Wild
Surf City Cranes provided drivers, dogman, riggers and mechanics*



COMPANY SNAPSHOT

COMPANY NAME Surf City Cranes Pty Ltd
ABN 50 118 714 837
ACN 118 714 837
COMMENCEMENT 2006
LOCATIONS **GOLD COAST** - (Depot & Office)
21 Hutchinson Street
Burleigh Heads 4220

BRISBANE

106 Mt Petrie Road
Belmont 4153
YATALA

NORTHERN NSW Cudgen 2487

MISSION

Our Mission is to provide an exceptional product, combined with friendly service and operational excellence. We add value to our client's lives by providing stress free and sustainable solutions every time. Through our pursuit of excellence and pursuit of environmental integrity, we consistently outperform our peers as we work toward regenerating our planet and educating our stakeholders on the systemic impact. Customer and employee satisfaction is guaranteed, and their life is made easier as we work together and safely deliver what we promise.

Surf City CRANES
1300 444 737

BELIEFS

WE BELIEVE IN -

- ★ **Customers** - Going Above and Beyond with Wow in Customer Service
- ★ **Our Team!** They are the Best and they Deliver what we Promise
- ★ **SAFETY** - Must Come First
- ★ **Honest Communication** - Solves All Problems!
- ★ **Supporting Our Community**
- ★ **Integrity, Respect, Honesty**
- ★ **Sustainability** - Save our Future



WE'RE THE BEST AT WHAT WE DO!

OUR SERVICES

13T CITY CRANE

- Maximum reach capacity 22 metres, increased to 30.5m with fly & needle
- Boom Length 24 metres
- All Wheel Steer
- Extremely useful for maneuvering in tight spaces
- Quick to be lift ready, fast to shift the load and pack up for off hire departure
- Suitable for difficult access and operating areas eg. driveways, laneways, switchyards, building sites

12-15T FRANNA

- Lifting capacity 12T at 1.6m radius &/or 1T at 15.5m
- Maximum system length: 15.86 + 2.66 = 18.4m
- Machine weight 17,000kg
- Highway speed 85km/hr max
- Site speed from stop to crawl 6km/hr 4wd
- Very versatile for unprepared surfaces
- Fast and efficient machine for those quick jobs that are out of reach and too heavy for human labour or manual handling methods

25T FRANNA

- Fully articulated four wheel drive (4WD)
- Easily operated and has load telescoping abilities
- Extendable, full powered boom length of 18.4 metres
- Ability to service vast scope of project capabilities
- Full service and maintenance records available
- Quick setup & pick-up

25T CLASS ROUGH TERRAIN

- 32 metres of full powered boom, it navigates the tightest, trickiest spaces with ease.
- Designed to move effortlessly between standard roads and the most challenging jobsite conditions
- Set up time of around ten minutes - it's one of the most efficient and effective cranes
- Perfect for unpredictable surfaces

35T CLASS ALL TERRAIN

- Deployable stabilisers on either end of the crane
- An amazing 30m extendable boom length
- Boom attachments can increase the reach by another 15m
- Safe and certified for public road
- Quick setup and pick-up
- Full service and maintenance records

60T CLASS ALL TERRAIN

- 40m full powered extendable boom
- Certified for both public road and off-road jobsite access
- Quick, easy setup
- Additional fly jib of 16 metres totals 56m-boom length.
- Max radius of 600kgs at 48m from centre of rotation
- Versatile, off-road tyres that offer access to all different types of worksites and surfaces

OUR SERVICES

80T CLASS ALL TERRAIN

- Six wheel drive (6WD)
- Eight wheel all wheel steer
- 50m extendable boom
- Additional 16M Fly Jib extension.
- Additional counterweight for heavy lifts and greater reach
- Certified for public road and off-road capabilities
- Quick setup
- Ability to travel with majority of its counterweight
- Offers unparalleled versatility, with several different boom configurations and counterweight options

100T CLASS ALL TERRAIN

- The LTM 1090-4.2 is the one and only
- 90-tonne 4-axle crane which can drive on the road with axle loads less than 22,000 lbs / 10 t.
- 100T Class All Terrain Crane MCR-100T has all the latest German technology and can work in general hire from a
- 40T to an 80T without additional counterweight. This machine covers it all.
- This crane can service all industries from construction, telecommunications, mining and maintenance requirements.
- Maximum reach of 700kg @ 62meters
- Main Boom length 60meters + 16meters fly & needle
- 6WD (six wheel drive)
- Eight wheel steer

130T CLASS ALL TERRAIN

- The GMK5230 is 130T Class All Terrain Crane can work in general hire from a 60T without additional counterweight.
- This machine can fit into tight spots due to steering.
- This crane can service all industries from construction, telecommunications, mining and maintenance requirements.
- Deployable stabilizers on either end of the crane
- Maximum reach of 900kg @ 66meters
- Main Boom length 60meters + 32meters fly & needle & inserts
- 10WD (ten wheel drive)
- All wheel steer

TRAFFIC CONTROL SERVICES

- We help maintain a safe environment
- for workers and pedestrians.
- Control traffic
- Directing people on how to safely
- navigate around the job site.

SPECIALISED TRANSPORT SERVICES

- Our transport fleet consists of:
- 12T Flatbed Rigid Truck
- 8T Rigid All Terrain Hiab (12m boom)
- Scania truck
- Trailers
- Utes

SPIDER CRANE

- With their versatile outrigger configurations, spider cranes can work on uneven surfaces and slopes, whilst its tracked mobility enables the crane to travel over rough terrain.
- Their outriggers are designed to stabilise the crane even when working on uneven surfaces.
- Great for challenging terrains.

MANITOUS

- 5 x Manitous ranging from 2.5T to 12 Tonne
- Telescopic handlers
- 4WD
- 4WS
- Versatile - 3 different steering modes.
- Cost effective option - Perfect for projects to leave on site and work efficiently.
- General site work, loading and unloading
- trucks and moving materials.

OUR HISTORY

Surf City Cranes commenced in 2006, the founders recognizing that there was an opportunity to provide not just crane hire, but hospitality within crane hire, as well as extended ancillary services. Their aim was to build a company that people could trust.

Surf City Cranes is not only a superb crane hire company, but they believe in providing well maintained cranes and exceptional service. Taking it a step further with compliance the company is ISO accredited for Quality, Environment and Safety as well as having a Sustainability plan in place.

Local charities are supported as they believe in giving back to their community. Since 2006 they have undertaken a wide range of general lifting and specialized lifting. The management team are experts and often provide assistance with a variety of ancillary equipment and transport required to make the job happen.

OUR SERVICES

Surf City Cranes operates from several depots that are strategically and centrally located. The head office is on the Gold Coast at Burleigh Heads just off the M1 Hwy and services surrounding areas including north, south and west of the Gold Coast and Northern New South Wales. The Brisbane depot is at Belmont and that has access to the Gateway arterial and is less than 10min to the Gateway Bridge servicing south, east, west and north Brisbane. Yatala and Cudgen cover middle and outer suburbs.

How we provide.

The crane fleet consists of various classes ranging from 20t class to 130t class cranes. The speciality rough terrain cranes combined with our Frannas, Liebherr and Tadano brands create a well maintained and versatile fleet which enables us to access all sites and complete our lifts in an efficient, safe manner. Manitous and trucks also provide additional services to cover all your transport needs.

"We add value to our client's lives by providing stress free and sustainable solutions every time. We book all your transport to ensure a coordinated time at an economical price. Our paperwork is top notch, we save you time, money and headaches, all with a smile and a can-do attitude!"

We have achieved accreditation with ISO9001:2015; AS/NZS4801:2001 & ISO14001:2015.

Surf City Cranes personnel will carry out site inspections and lift plans and advise customers of the most efficient and cost-effective methods for working on your project. Key staff identify hazards and recommend controls to be put in place to limit the risks at your work site.

OUR SERVICES

Our experience consists of: Concrete Tilt and Panel Erecting, Civil and Bridge Construction, all types of building and construction, General Hire, Long term hire, Rigging and Dogging, Machine Installation and removal, lifting boats, building crushing plants, rides and much more.

Why we provide the best service. Building relationships with like-minded companies, ensures that we can solve problems together, always find the solution and can provide competitive rates as well as provide amazing service. Punctuality, communication, assistance, well maintained machines; fantastic staff are all part of who we are and what we do.

Craneshift Pty Ltd provides transport and with the engagement of our team specialises in exceptional service, experience, knowledge and offering lift engineering and detailed tendering.

OUR FLEET

From day one, our main objective at Surf City Cranes was to provide our construction clients with a comprehensive and exceptional crane hire service – that mission has certainly been accomplished. Today, we have the best and biggest fleet of cranes in the area, including everything from tele-handlers for long term hire and ancillary equipment including spreader beams and concrete kibbles for the larger sites as well as ground protection pads, steel road plates, cargo cages skip bins and more. You name it and it's available for hire from Surf City Cranes. Our fleet has something to suit every jobsite, 12 tonne all-wheel drive cranes up to the supply of heavy-duty 200T machines. Our fleet also includes safety features; boom and slew anti-collision lockout perimeters. We have working at height safety processes, tag lines and harnesses for counterweight movement and the Liebherr MCR capabilities exceed other brands in their capacity.

Educating our clients is important to us, as educating you in the different brand crane capacities (eg 55T Liebherr vs Tadano has different boom lengths) will save you money long term.

If you simply look at the tonnage you may end up paying more than you should. At Surf City Cranes we go above and beyond with safety and service to assist you, our valued client.

13T CITY CRANE

13T City Cranes MR-130R is a little powerhouse machine with the ability to service those

versatile jobs that have restricted access. This crane can service all industries from construction, telecommunications, mining and maintenance requirements.

- Maximum reach capacity 22 meters, Increased to 30.5m with fly and needle
- Boom length 24 meters
- All Wheel Steer

12-15T FRANNA

The 12 tonne Franna articulating crane has been one of the biggest contributing cranes to the building industry, having been serving the construction and building industry Australia wide for 25 years from 1990 up to the present day. This articulating

pick and carry crane has been so sort after on every building site. Its maximum lifting capacity is 12 tonnes. This model has since been upgraded to a 15 tonne capacity by the manufacture.

- Lifting capacity 12t @ 1.6 M Radius and or 1t @ 15.5M
- Maximum system length: $15.86 + 2.66 = 18.4\text{m}$
- Machine weight 17,000 kgs
- Highway speed 85 Klm/hr Max. Site speed from stop to crawl 6klms/hr 4wd

25T FRANNA

Surf City Crane's Mac25, 25T Terex Franna crane is perfect for small to medium-sized

jobs for load transport. They have a host of features that make them a vital piece of equipment for all types of industrial jobs:

- Fully articulated four-wheel drive (4WD)
- Easily operated and has load telescoping abilities
- Extendable full powered boom length of 18.4 metres
- Ability to service vast scope of project capabilities
- Quick setup and pick-up
- Full service and maintenance records available

The Mac 25 Terex Franna crane has loads of power to go along with its far-reaching, extendable boom.

25T CLASS ROUGH TERRAIN CRANES

For manoeuvrability and versatility, you can't go past the 25T Rough Terrain Slew Crane. This is our most compact rough terrain model – with 32 metres of full powered boom, it navigates the tightest, trickiest spaces with ease.

At Surf City Cranes, we have five (5) 25T Rough Terrain Slew Cranes available for hire. The 25T is one of our more affordable rental cranes for rough terrain. Our 25T Cranes have an impressive maximum lifting capacity of twenty tonnes however have an equivalent lifting capacity of other companies 30 tonne machines. With a set up time of around ten minutes, it's one of the most efficient and effective cranes on the worldwide market.

35T CLASS ALL TERRAIN

At 35 tonnes maximum capacity, Surf City Crane's Liebherr 35T mobile all-terrain crane

is capable of handling almost all loads and tasks on the jobsite or build site.

- Deployable stabilisers on either end of the crane
- An amazing 30m extendable boom length
- Boom attachments can increase the reach by another 15m
- Safe and certified for public road
- Quick setup and pick-up
- Full service and maintenance records

60T CLASS ALL TERRAIN CRANES

For heavy-duty projects and complex jobsites, the MRC 60T class Liebherr All-Terrain Crane has the muscle you need to get things done. Suited to all types of surfaces and conditions, this crane is the most powerful machine in its class worldwide.

Liebherr has 45% market share of crane sales worldwide, showing how popular these machines are.

Features include:

- 40m full powered extendable boom
- Certified for both public road and off-road jobsite access
- Quick, easy setup
- Additional fly jib of 16 metres totals 56m-boom length.
- Max radius of 600kgs at 48m from centre of rotation

This machine is a real workhorse; with its stabilising outrigger beams, it can lift loads of up to 55 tonnes. Need to navigate muddy or tough areas? Not a problem. The 55T is fitted with off-road tyres, so it can manoeuvre into tricky areas with ease.

Versatility is the name of the game here. The 55T offers several different boom configurations and counterweight options. Being one of two very popular cranes in this crane capacity range, it is a very cost-effective solution.

80T CLASS ALL TERRAIN CRANES

For your more heavy-duty projects, the MRC 80T Class Liebherr All-Terrain Cranes are the biggest, toughest all-terrain cranes in our fleet. This impressive piece of equipment can handle the heaviest loads with smooth efficiency.

At Surf City Cranes, we have these very popular 80T Class Liebherr All-Terrain Cranes available for hire which operates above its competitor's class.

The 70's Features include:

- Six-wheel drive (6WD)
- Eight wheel all wheel steer
- 50m extendable boom
- Additional 16M Fly Jib extension.
- Additional counterweight for heavy lifts and greater reach
- Certified for public road and off-road capabilities
- Quick setup
- Ability to travel with majority of its counterweight

Our 80T tonne class MRC 80T Class All-Terrain Crane offers unparalleled versatility, with several different boom configurations and counterweight options. This machine can be used as a 50T, 55T, 60T, 65T, or 70T capacity configuration. With its extra fly jib extensions, it adds a further 16 meter reach to the already 50 meter live boom. It has completed jobs larger cranes were hired in to do, assisting in reducing the customers' costs.

Surf City Cranes has two of these amazing cranes in their fleet. These machines are a real powerhouse; its cutting edge stabilizing mechanism lets it lift loads of up to 70 tonnes. Need to navigate muddy or tough areas? Not a problem. With its off-road tyres with six-wheel drive, tricky areas are a cinch for the MRC80T.

100T CLASS ALL TERRAIN CRANE

The LTM 1090-4.2 is the one and only 90-tonne 4-axle crane which can drive on the road with axle loads less than 22,000 lbs / 10 t. 100T Class All Terrain Crane MCR-100T has all the latest German technology and can work in general hire from a 40T to an 80T without additional counterweight. This machine covers it all.

Surf City Cranes is the first crane company in Australia to practice sustainability and deliberately purchase the LTM 1090-4.2 crane which has the Tier 4 engine, thus reducing carbon and noise emissions.

Outstanding mobility, power and economy. These are the main features of the LTM1090-4.2. It can be driven all over the world at low cost as it can be configured with a whole series of different axle loads for driving on roads and sites. ECOdrive and ECOmode reduce its fuel consumption and noise emissions - better for drivers and the environment! Our Liebherr VarioBallast and VarioBase innovations enhance its capacity, safety and flexibility.

This crane can service all industries from construction, telecommunications, mining and maintenance requirements.

- Maximum reach of 700kg @ 62meters
- Main Boom length 60meters + 16meters fly & needle
- 6WD (six-wheel drive)
- Eight-wheel steer

130T ALL TERRAIN CRANE

The one hundred thirty tonne crane is a powerhouse machine with the ability to lift nearly any jobsite load needed. Surf City Crane's 130T is a Liebherr LTM 1120 4.1 All terrain Crane, which means it is known for its peerless engineering and performance. It is highly regarded as one of the best all-terrain cranes for Australian roads and construction sites. With its ten heavy duty tyres, the 130T crane is suitable for all types of terrain. It can easily travel over asphalt and cement on roadways as well as the mud and rough of a construction site.

The 130T crane comes equipped with a great array of features. The stabilising deployment of the crane during lifting allows gives it a secure base to lift loads up to 130 tonnes safely and securely.

Surf City Cranes will assist you in building the crane fleet you need to get your job done quickly and safely at a great price. Our team will work with your project managers to ensure you have everything you need to get started on the job straight away.

SPECIALISED TRANSPORT SERVICES

Our transport fleet consists of:

- 12T Flatbed Rigid Truck
- 8T Rigid All Terrain Hiab (12m boom)
- Scania truck
- Trailers
- Utes

CIVIL WORKS

Surf City Cranes has been involved in various civil construction projects ranging in value from \$500 000 to \$350million. This includes the building of the largest crushing plant in the south east with Boral Resources as well as the Banora Point Upgrade Project to the value of \$359 million. We have also provided labour to operate cranes in Nauru, a FIFO situation.

Our experienced team liaised constantly with our client (ABI group) to provide day and night crane hire with crews to ensure minimum disruption to the traffic. Our cranes commenced at the projects inception in 2009 and worked until completion in 2012.

Our professional expertise in services included:

- Site inspections and advice
- Providing crane hire and sourcing other equipment
- Providing experienced crews with great attitude and exceptional skills
- Environmental awareness
- Honest communication

Your project would benefit from engaging us as your preferred contractor as we are always professional and look at delivering an efficient, economical approach for our clients.

SYSTEMS

QUALITY MANAGEMENT AND SAFETY SYSTEMS

Surf City Cranes are fully accredited for: ISO9001:2015; AS/NZS4801:2001 and ISO14001:2015. Our Quality, Environment and Safety system has been reviewed by international auditors and approved and we are proud to be one of the few companies that have achieved this in the crane industry. We continually introduce new policies and procedures in line with a changing digital world and more importantly to comply with all Safety and Industry standards. EPOS, a crane operational system, was installed and this helped in the provision of effective allocating through efficient management and constant track of our equipment and invoicing.

Through EPOS, Surf City Cranes manages its entire crane and transport operational procedures, ensuring a smoother operational and on time crane delivery.

Our Management System contains documentation on all of the below subjects, and these

are an integral way of how we manage the business.

- Policy
- Legal
- Hazard Identification & Risk Management
- Objectives and targets
- Accountabilities and responsibilities
- SCC Staff Records/Inductions
- Contractors Engaged
- Documentation Control
- Consultation and Communication
- Operations
- Company Policies and Procedures
- Measuring and monitoring
- Incident / Investigation Reports
- Records
- Archive
- Agreements

Surf City Cranes tailors each individual project with their SWMS to ensure safety is paramount and that we always deliver a quality, safe product, which meets our clients' requirements and high standards. We achieve this through constant monitoring, detailed planning, implementation and review.

EPOS ALLOCATION SYSTEM

We have a computerised allocation system for all bookings to ensure that all processes are streamlined, cost effective and efficient. This system also communicates with staff advising work times and job requirements.

CRANE XPERT

Surf City Cranes has computer lift planning software which allows us to do lift calculations to provide to our clients. This is particularly helpful with dual lifts and ensuring smooth running projects.

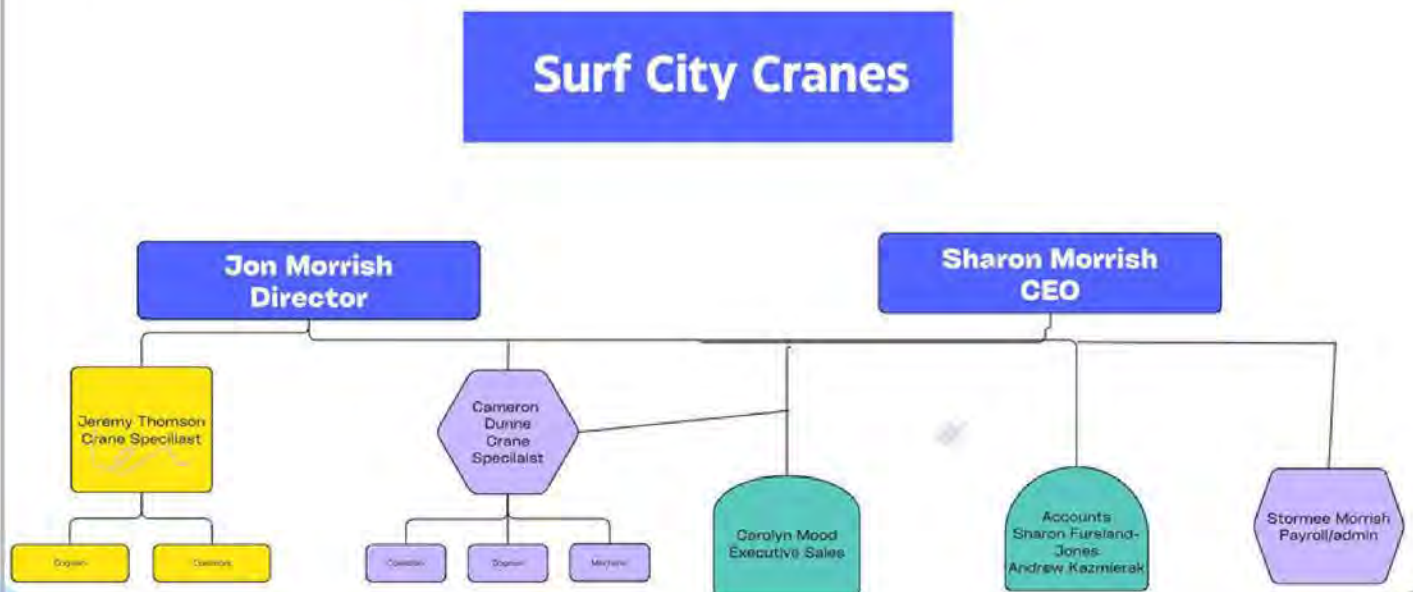
Surf City Cranes provides the following:

- Tilt up panel erection
- Steel Erection
- Machinery installations
- Specialised rigging requirements
- Barge work
- Lifting boats
- Onsite labour

BLUEBEAM

- A 3D program for lift planning.

TEAM



**Director - Jon Morrish**

Jon is the Director and has over 30 years' experience in the crane industry. Jon grew up in the Australian outback learning an abundance of life skills such as riding motorbikes, horses, cars, trucks, planes and operating machinery. With this isolation being a bush mechanic was a must and having to learn how to work and fix anything was a necessity since you could not just call on anyone.

Jon loves cranes and moved into the construction industry early on, determined to gain as many tickets and knowledge as possible. Jon is also the business development Manager and currently manages the maintenance of the Equipment as well still being the 'bushy' at heart and being very hands on with all aspects. Being from the outback means you are also very hospitable and have this resilience instilled into them, so combined with Jon's love of cranes and people means he will do his utmost to provide the best crane and the best service and the best staff.

**CEO - Sharon Morrish**

Sharon is responsible for systems, contracts, paperwork, finance, HR issues and generally a multi-task role. Sharon has extensive Management experience, previously being in hospitality as: -

- General Manager of Crushers Leagues Club,
- General Manager of Aspley Leagues Club
- General Manager of Southport Yacht Club.

Sharon also worked on Hamilton Island as Secretary to Keith Williams, Senior Duty Manager, Front Office Supervisor and Events Co-ordinator.

**Crane Specialist - Jeremy Thomson**

Jeremy has worked in the construction industry for over 15 years and has extensive experience in operations (driving, dogging and allocating). Jeremy is experienced in a variety of tasks from selling to driving, providing lift plans and allocating cranes with the main aim to assist with sales and focus on customer service.

**Crane Specialist – Cameron Dunne**

Cameron manages the day-to-day fleet and is your first point of contact. Responsible for co-ordination of equipment, machinery and personnel ensuring that the operations are conducted safely. Cameron has experience from driving to allocating cranes as well as supervisory experience.

**Executive Sales Assistant – Carolyn Mood**

Carolyn is our Executive Sales Assistant – Carolyn is responsible for administrative sales duties, contacting clients, maintaining management systems, following up leads and assisting Jon & Jeremy with sales. Carolyn has experience with governments, sales, administration, project management and events.



Boral crushing plant - Surf City Cranes supplied cranes, labour, riggers, welders and supervision.

CERTIFICATES & LICENSES

Our personnel are specialists in their field and we employ,
Diggers, Riggers, Crane Operators and Truck Drivers.

Construction Induction Card

C0 Open ticket

CN – non slewing ticket

C6 Slewing Mobile Crane up to 60T

DG Dogging, RB - Rigging, RI, RA - Rigging

Not only are they required to have their license, but we also do our own Verification of Competency (VOC) to ensure that they are qualified to drive and dog our own fleet of cranes.

INDUCTIONS

Staffs are required before they commence work with us to undertake an internal induction. Site inductions are also completed at the request of the contractor.

Medicals – Depending on the site some employees are required to have their Hep A, B shots and we are able to accommodate this.

RATES

Please enquire to ensure that rates are current. Note that we are able to negotiate for long term or dry hire of equipment. Lift plans are also completed for specific sites.

VISION

“To anyone in Queensland in the building industry, we are the crane company of choice. We exemplify exceptional service, have a superb product, are a passionate and competent team and always deliver the best. We’re the best at what we do.”

When the customer contacts Surf City Cranes, they are relieved to hear the professionalism conveyed and the knowledge expressed, and it makes them realize that this is the crane company for them. Surf City Cranes adds values to so many lives.

The crane arrives, is well maintained and the staff not only look impeccable but are happy to be working for the best crane company in Australia. All paperwork is correct, checklist done, and knowledge is unchallenged.

Passionate about what we do, growth continues, offices are built, systems are always improving, and the HR department ensures detail and safety.

Communication is exceptional between depots, Management team care about the staff and customers are WOWed by the service they receive.

Staff training occurs regularly, and help is given in their personal lives. This happiness is conveyed to the customer and staff are inspired to be the best they can be.

Sustainability is a priority; we believe in saving our planet and finding ways to ensure we meet all standards. Our search to improve never ends.

Maintenance is always up to date and the workshop is clean and organized, with inventory up to date. Every piece of equipment is digital, and all service records are maintained.

The company is successful, innovative and donates to the community. Nothing is too much trouble because we love what we do, and forever change to meet the market.

INDUSTRY AFFILIATIONS

Crane Industry Crane Association
Cranesafe
Chamber Commerce industry

GENERAL TERMS & CONDITIONS/INSURANCES

www.surfcitycranes.com.au

EMAIL

info@surfcitycranes.com.au

PHONE

0421 665 654

WEBSITE

www.surfcitycranes.com.au

ABN

50 118 714 837