

NAC

Northern Australia Civil

COMPANY PROFILE

**Civil Contracting
& Plant Hire**

Final Trim Grader Operators / Final Trim Excavator Operators

140m Graders / 30t – 36t Cat Excavators / 5t – 15t Cat Excavators / Water Trucks / Tippers





TO WHOM IT MAY CONCERN

Northern Australia Civil would like to take this opportunity to outline our business strengths and why we can assist you with your future opportunities in the Northern Territory. NAC is excited to have the opportunity to work with your company on this major infrastructure project.

NAC is a Northern Territory owned and operated Company. We specialize in the supply of construction plant and machinery and contracting services.





What separates our business from the other plant hire companies?

- Our company provides a fleet of modern new Caterpillar machinery supported by a 24 hour workshop facility and on site break down crews.
- Our rates are guaranteed to be competitive.
- The NAC excavator fleet ranges from 5t mini hydraulic excavators to 36t larger machines. All come with a wide range of trenching buckets, clean up/batter buckets, rock picks, sieve buckets, rock hammers, rotating earcat rock cutting heads, tree mulching attachments and logs grabs. We will assure your team is always equipped with the right tool for the right job.
- All of our graders and excavators are equipped with modern Trimble machine guidance potentially reducing the cost of survey and set out to your project, and optimizing the efficiency and quality of project workmanship.



- NAC has a team of highly skilled local operators with years of experience, and many of our team have worked on other major road infrastructure projects.
- Our team of operators have an excellent safety culture. They are eager to learn and comply with your companies safety requirements. All our employees hold relevant Australian accredited machine operator tickets, First Aid Certificates and Australia Industry Induction cards.



- NAC is also working closely with a local training and assessment company, to provide apprenticeships in civil contracting and construction to local ATSI students, who are looking to enter the civil construction industry.
- NAC is passionate about providing work opportunities for experienced and inexperienced Indigenous Australians. We have the capacity to employ ATSI students on apprenticeship programs offering Civil Construction Certificates 1, 2 & 3 in Earthmoving and Plant Operation. We offer one on one support to individuals ensuring time is spent developing their ability to operate machinery in a safe, productive, and most importantly competent way.

NAC recognises the significance of Aboriginal culture, Indigenous people, and their beliefs which in turn gives NAC an opportunity to mentor and work with our ATSI employees on a trusted level

- *Our Final Trim Grader Operators have experience with:-* subgrade preparation, sub base and base course mixing, placement and Final Trim, high level of Trimble GPS and UTS operating and calibration experience, running small crews, detailed swale drains and batters, working in close proximity to traffic and public, intersection and detailed pavement construction, reading and understanding project drawings and working independently.





- *Our Final Trim Excavator Operators have experience with:-* detailed batter and slope construction, service installation. (Including drainage, electrical, and sewer), detailed trenches, graded trenches, bulk excavation, large scale cut to fill operations, acid sulphate treatment, rock placement and erosion protection, landscaping and rehabilitation work, clearing, grubbing and top soil stripping, hard rock excavation and hammer and Earcat operating ability.



We also offer experienced operators for the following machines:-

- Trucks (side tippers, end tippers, articulated dump trucks)
- Water Trucks (Semi and rigid)
- Skid Steer Loaders
- Front End Loaders
- Rollers

Mobilization

NAC can mobilise our fleet
any where in the Northern
Territory / Western Australia





Current List of Equipment

CAT 140 M Graders

Trimble GPS and UTS Robotics inclusive of all Trimble components required to operate self sufficiently, Mine Spec, 2 e stops, Battery isolators, Flashing Light, Wheel chocks, Spare tyre, Rippers and scarifiers, High vis stripes, UHF, AM FM Radio, Reverse alarm, Reverse camera



CAT 329 DL Excavators

Trimble Dual Grade GPS, Mine Spec, Hand rails, 3 e stops, 2 x battery isolators, Tilting head quick hitch, AM FM Radio, UHF, Flashing Light, Batter Bucket, GP Bucket, Sieve Skeleton Bucket, Eaar cat, Log grab, Long reach available on request



CAT 289 C Skid steer loader

Trimble GPS Optional if required, Flashing Light, 4 in 1 Bucket, Forks attachment, AM FM Radio, UHF, Reverse alarm, High Vis stripes



CAT 336 DL Excavators

Trimble Dual Grade GPS, Mine Spec, Hand Rails, 3x E stop, 2 x Battery Isolators, Tilting Head Quick Hitch, AM FM Radio, UHF, Flashing Light, Batter Bucket, GP Bucket, Sieve Skeleton Bucket.



CAT TH414 Tele handler

Fork Attachment, Jib Attachment, 4 in 1 Bucket Attachment, EWP Basket Attachment, Mine Spec with 2x E stop, 2 x Battery Isolators, AM FM Radio, UHF, Flashing Light



Mack 15,000lt W/Truck

Mine Spec, Automatic Transmission, Batter Sprays, Drop Bars, Cannon, Reverse Camera, Reverse Beepers, Flashing Light, UHF, AM FM Radio, High Vis Stripes.





CAT M313D Wheeled Excavator

Mine Spec, Hand Rails, 3x E stop,
2 x Battery Isolators, Tilting Head
Quick Hitch, AM FM Radio, UHF,
Flashing Light, Batter Bucket, GP
Bucket, Sieve Skeleton Bucket.
Trimble GPS (on request)



CAT 305C Mini Excavators

Mine Spec, Hand Rails, 3x E stop,
2 x Battery Isolators, Tilting Head
Quick Hitch, AM FM Radio, UHF,
Flashing Light, Batter Bucket, GP
Bucket, Sieve Skeleton Bucket.
Trimble GPS (on request)



CAT 623 G Scraper

Mine Spec, Hand Rails, 3x E stop,
2 x Battery Isolators, Stinger/Flat
Cutting Edges, AM FM Radio,
UHF, Flashing Light, Trimble GPS
(on request)



11,000lt Vacuum Truck

Mine Spec, Hand Rails, 3x E stop,
2 x Battery Isolators, AM FM
Radio, UHF, Flashing Light, Pot
Holing Service Locator
Attachments, Pressure Cleaner
and Pipe Cleaner, Low Hours





RATES

	DRY	WET
140M Grader	\$95/HOUR	\$226/HOUR
329 DL Excavator	\$95/HOUR	\$213/HOUR
336 DL Excavator	\$105/HOUR	\$252/HOUR
305C Excavator	\$350/DAY	\$115/HOUR
10T Truck	\$350/DAY	na
15000lt W/Truck	\$360/DAY	na
289C Pozi Track Loader	\$350/DAY	na
623G Scraper	\$200/HOUR	\$370/HOUR
TH 414 Tele Handler	\$400/DAY	na
18,000lt Vacuum Truck	\$95/HOUR	\$285/HOUR
5T Tipper Truck	\$300/DAY	na
Terex 20T Franner	\$3500/WEEK	na
40t All Terrain Crane	\$6000/WEEK	\$10,000/WEEK

Please note the above rates are not inclusive of GST and are subject to competitive negotiation.



OUR PEOPLE

Chris Wilson – General Manager



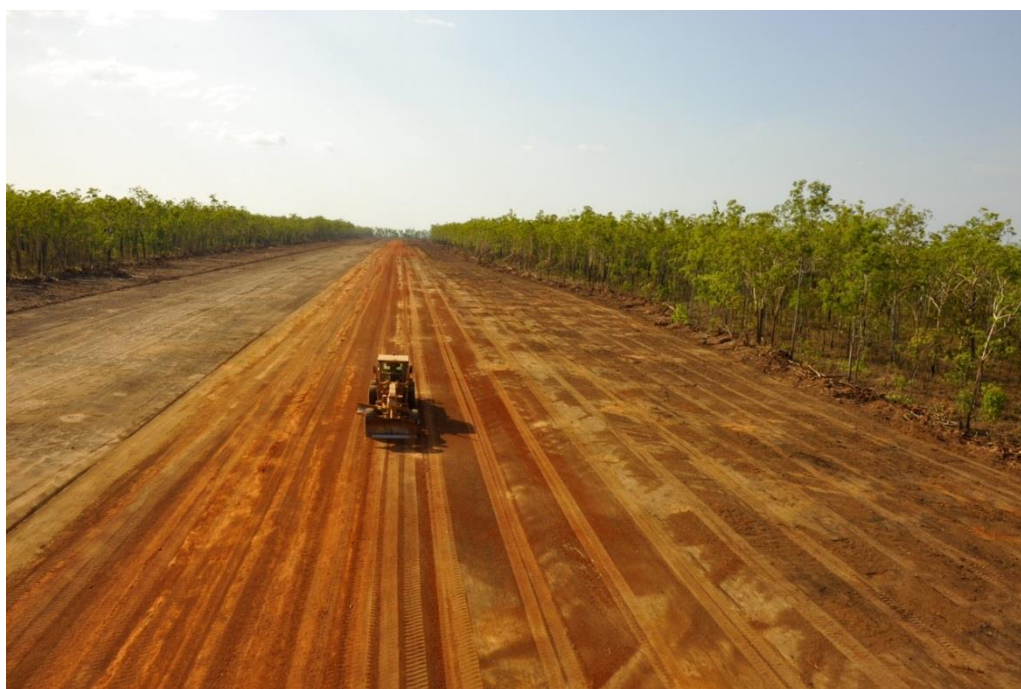
Chris is a born and bred Territorian with over 10 years' experience in the civil construction and plant hire industry. Chris has developed an understanding for what key components can make projects successful.

His background is project based working as a Civil Engineer and a Project Supervisor on some of the Territories largest infrastructure upgrades and major projects.

His knowledge and understanding of plant and machinery at an operator level right through to a management level, gives NAC the advantage of providing the correct plant and machinery solutions to complete your project efficiently.

Chris's career in this industry has given him a sound understanding on what is required to become an effective team member in any environment.

See Testimonials for Chris Wilson on the last page of document.





Please do not hesitate to contact me should you require any further information, and I thank you in anticipation for your consideration of this proposal.

Yours sincerely

Northern Australia Civil



Chris Wilson
General Manager

Mob: 0418 894 673
Fax : (08) 89414541
ABN : 94 165 173 384

PO BOX 3942 DARWIN NT 0801



Testimonials

Peter Eastick

Deputy Area Manager – Process Trains & Inlet Facility



“Using proven local civil experience, with people who have a “can do” attitude, always leads to a successful project that maintains high standards of safety and environmental awareness, overcomes schedule challenges and provides surety of budget. Chris has proven this on many occasions, across a variety of civil challenges, with his ongoing management commitment and experience. His focus on his people and technical knowhow is setting Anukura up to be a leader in civil construction that will be sought after by clients who demand contractors who go over and above industry standards.”

Tony Kruger

General Superintendent



“Chris has worked with my team for over 10 years, his commitment and pride he brings to a project is second to none. Chris has a natural Ability to lead employees from all kinds of different backgrounds and get the best out each individually. Chris was part of a team at the Ichtys project who achieved an outstanding 2 500 000 Hours LTI free, this is a credit to the culture Chris leads within his team and a credit to his attention to detail and ability to oversee all aspects of his projects “